

# "HIGHGATE ON THE GREEN No. 1"

A SUBDIVISION OF PART OF THE S.E. 1/4 OF THE S.W. 1/4 OF SECTION 28, T.2 N., R.8 E.,  
CITY OF WIXOM, OAKLAND COUNTY, MICHIGAN

BROWN & FOX, P.C.  
1501 FORDY AT GRAND  
BIRMINGHAM, MICHIGAN 48409

L 325 P 5



ALL LENGTHS SHOWN ON CURVES ARE ARC LENGTHS

ALL DISTANCES ARE IN FEET AND DECIMALS THEREOF

DECLARATIONS OF COVENENTS, CONDITIONS AND RESTRICTIONS  
RECORDED IN LIBER 5222 PAGE 253, O.C.R.

AGREEMENT FOR PLANNED UNIT DEVELOPMENT  
RECORDED IN LIBER 5222 PAGE 247, O.C.R.

BYLAWS OF "HIGHGATE ON THE GREEN" ASSOCIATION  
RECORDED IN LIBER PAGE , O.C.R.

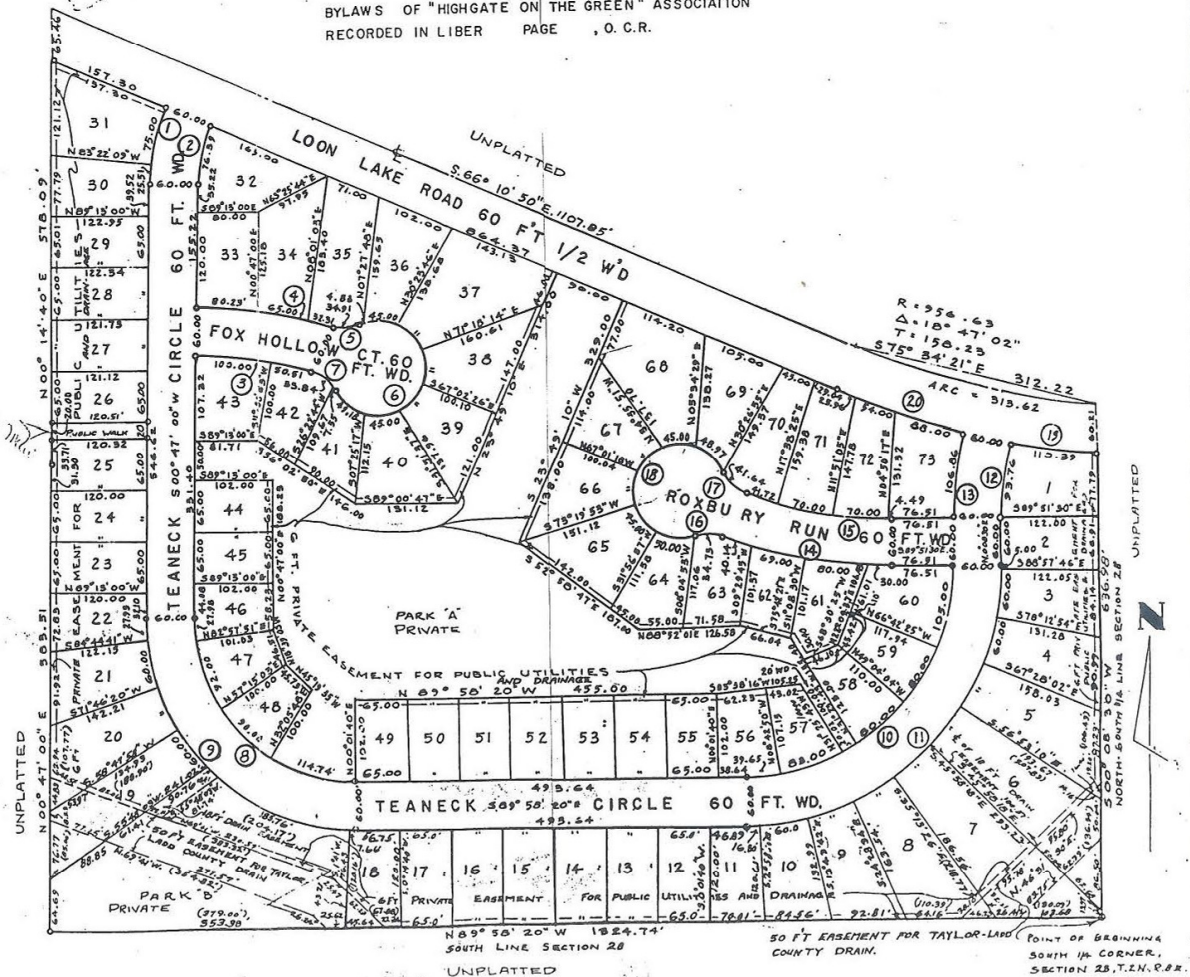
CURVE DATA

No.	R	L	Δ	T	LONG CHORD	
					BEARING	LENGTH
1.	250.00	100.51	23° 02' 10"	50.94	N. 12° 18' 05" E.	99.84
2.	190.00	76.39	23° 02' 10"	38.72	N. 12° 18' 05" E.	75.80
3.	560.00	150.51	15° 23' 56"	75.71	S. 81° 31' 02" E.	150.05
4.	620.00	177.54	16° 24' 24"	89.38	S. 81° 00' 48" E.	176.93
5.	50.00	34.91	40° 00' 32"	18.20	S. 87° 11' 05" W.	34.21
6.	60.00	279.01	266° 25' 58"	—	S. 20° 23' 50" W.	87.45
7.	50.00	41.59	47° 25' 53"	21.96	S. 50° 06' 07" E.	40.22
8.	205.00	824.72	90° 45' 20"	207.72	N. 44° 35' 40" W.	291.82
9.	265.00	419.76	90° 45' 20"	268.92	N. 44° 35' 40" W.	377.23
10.	259.86	407.67	89° 53' 10"	259.34	S. 45° 05' 05" W.	367.13
11.	319.86	501.80	89° 53' 10"	319.22	S. 45° 05' 05" W.	461.90
12.	345.00	93.76	15° 34' 14"	41.17	N. 07° 55' 37" E.	73.47
13.	405.00	106.86	15° 07' 05"	53.74	N. 07° 42' 03" E.	106.55
14.	585.00	219.14	21° 27' 48"	110.87	N. 79° 07' 36" W.	217.84
15.	525.00	186.21	20° 19' 20"	94.10	N. 79° 41' 50" W.	185.24
16.	50.00	34.75	39° 49' 07"	18.11	S. 88° 18' 16" E.	34.05
17.	50.00	41.64	47° 43' 19"	22.12	N. 45° 40' 30" W.	40.46
18.	60.80	278.97	266° 24' 00"	—	N. 24° 59' 10" E.	87.48
19.	1016.63	110.39	06° 13' 17"	55.25	N. 82° 08' 35" W.	110.34
20.	1016.63	167.96	09° 27' 57"	84.17	N. 70° 54' 48" W.	167.76

OAKLAND COUNTY TREASURER'S CERTIFICATE

*[Signature]*  
County Treasurer

RECORDED  
MICHIGAN  
LIBER 325  
PAGE 5  
JUN 19 93



50 FT EASEMENT FOR TAYLOR-LAND POINT OF BEGINNING SOUTH 1/4 CORNER, SECTION 28, T.2 N., R.8 E.